

University of Leeds, School of Biology



www.leeds.ac.uk

WHO WE ARE

The University of Leeds is a large research university in the north of England. The Faculty of Biological Sciences at Leeds is one of the largest collections of biologists in the UK, and the university is consistently one of the largest centres of BBSRC and NERC funded research. The Ecology and Evolution research group within the faculty has twice served as a Marie Curie centre of excellence in postgraduate teaching of biodiversity and conservation science.

WHAT OUR EXPERIENCE IS

We have substantial experience in spatial ecology of populations and communities, in agricultural ecology and agri-environmental management, and in the development of novel tools to analyse and visualise these issues.

WHAT WE DO IN EU BON

We have substantial experience in spatial ecology of populations and communities, in agricultural ecology and agri-environmental management, and in the development of novel tools to analyse and visualise these issues.

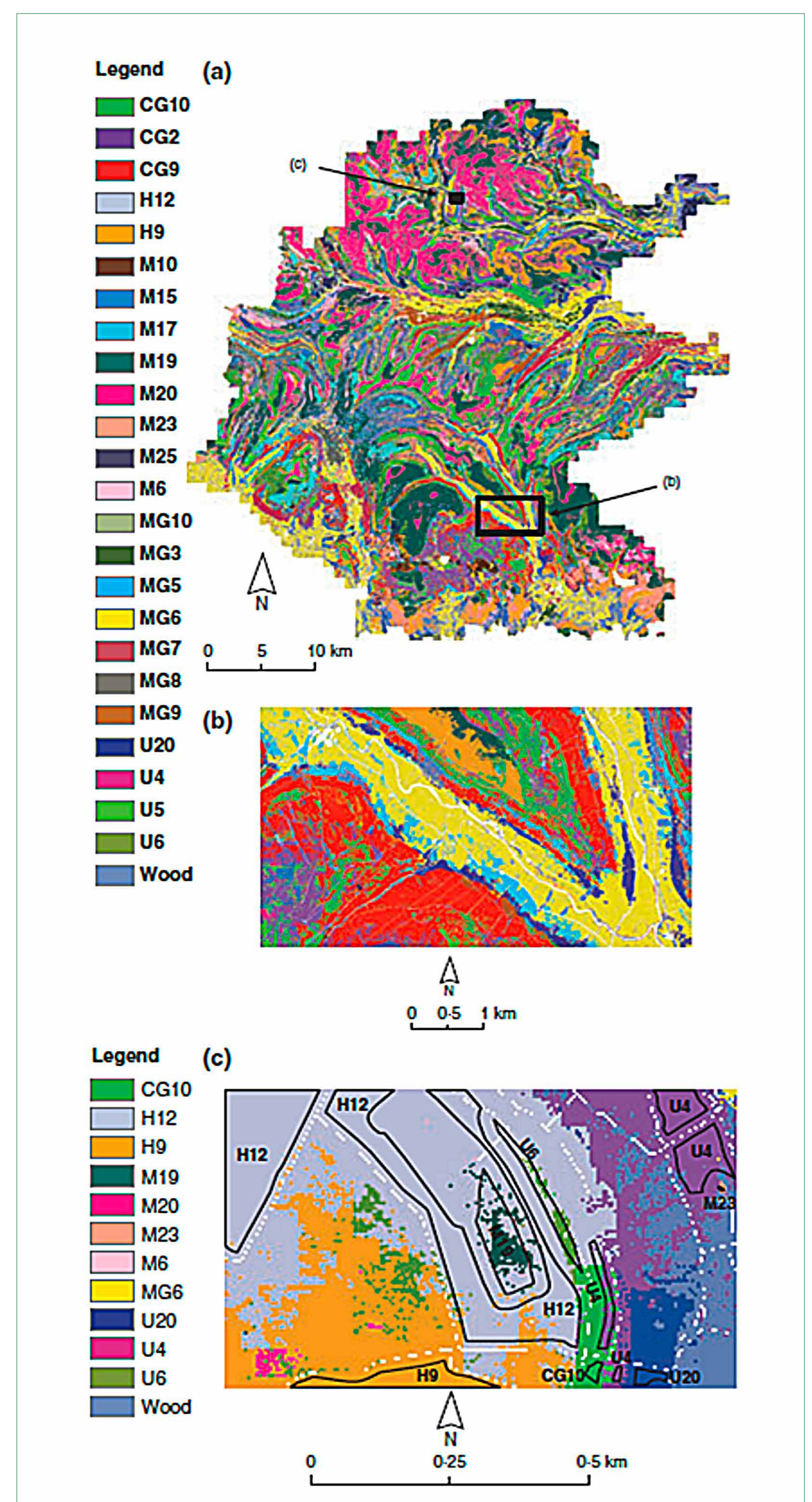
IN EU BON WE MAINLY CONTRIBUTE TO

WP 3 (Lead) Improving tools and methods for data analysis and interface

WP 4 Link environment to biodiversity: analyses of patterns, processes and trends

WE ARE ALSO INVOLVED IN

- » SCALES
- » ExpeER
- » STEP
- » UK Insect Pollinator Initiative: AgriLand
- » UK Insect Pollinator Initiative: Urban pollinators
- » UK BBSRC Estimating biodiversity and ecosystem function



Prof. Bill Kunin



- » Professor of spatial ecology
- » Expert in multi-scale ecological patterns and processes, especially in plants and insects

Prof. Tim Benton



- » Professor of population ecology
- » An authority on agri-environmental issues: he serves as the UK "champion" on global food security

Dr. Charlie Marsh



- » Spatial ecologist
- » Extensive experience in community ecology and conservation in the tropics