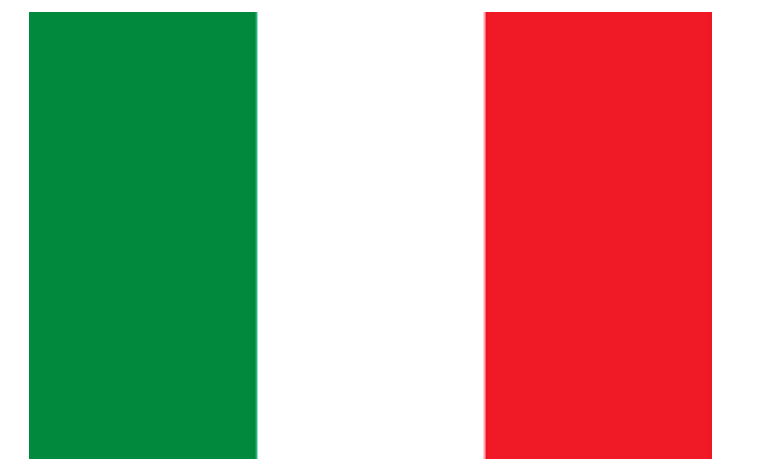


**EURAC**  
research

# European Academy of Bozen/Bolzano (EURAC)



[www.eurac.edu](http://www.eurac.edu)

## WHO WE ARE

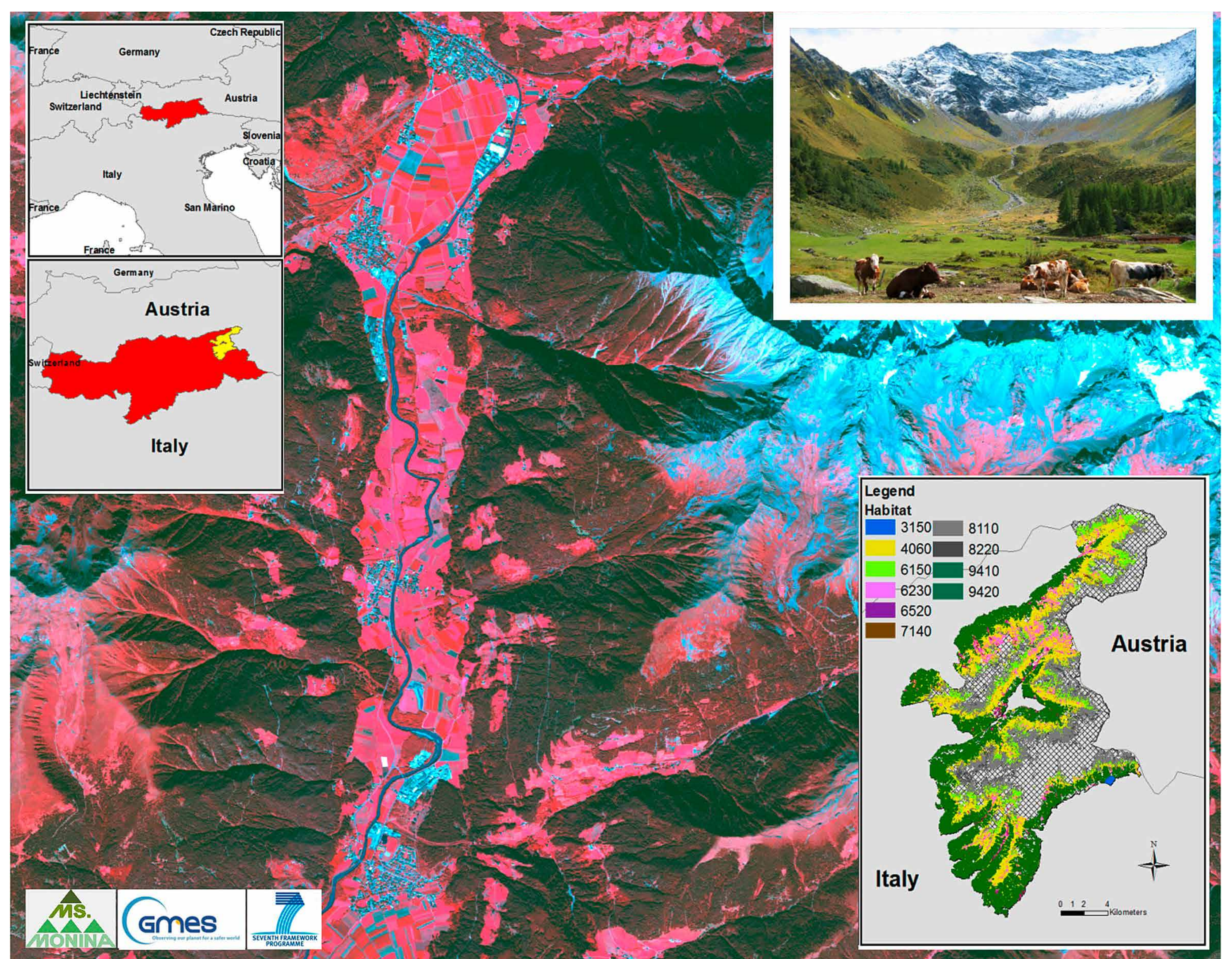
EURAC is an interdisciplinary research centre with more than 300 scientists based in Bolzano, Italy. One of EURAC's main focuses is mountain related research. At the EURAC Institute for Applied Remote Sensing we are working mainly on approaches to fuse earth observation (EO) techniques with in-situ and modelling approaches for an advanced monitoring of the Alpine Environment.

## WHAT OUR EXPERIENCE IS

EURAC is involved in various project on monitoring alpine biodiversity and alpine habitats with remote sensing approaches, taking into account impacts of climate change and reporting obligations to NATURA 2000 network.

- » MS.MONINA (Multiscale Services for Monitoring NATURA 2000 Habitats of Community interest) – a GMES Downstream Service project
- » EUFODOS (European Forest Downstream Service) – a GMES Downstream Service project
- » HELM – Harmonised European Land Monitoring – GMES project

Furthermore, EURAC is partner in other projects on habitat monitoring like the EU-Territorial Cooperation Project HabitChange (Adaptive Management of Climate-induced Changes of Habitat Diversity in Protected Areas). The role of EURAC in all cases is to cover the alpine ecosystems and to provide the full chain from data processing, data interpretation and decision support to users, which are typically regional authorities.



## WHAT WE DO IN EU BON

EURAC will support the integration of activities and results from on-going GMES projects on biodiversity and land cover into EU BON and contribute to the discussion on advanced EO-techniques which have been developed at EURAC in the scope of these GMES projects. Furthermore, EURAC will provide within WP5 findings from its high-alpine test-sites for EO-based and integrated NATURA2000 monitoring (nature park Rieserferner-Ahrn, UNESCO world-heritage Dolomites).

## IN EU BON WE MAINLY CONTRIBUTE TO

- WP 3** Improving tools and methods for data analysis and interface

### Marc Zebisch



- » Head of the Institute for Applied Remote Sensing
- » Focusing on integrating Remote Sensing in interdisciplinary research on monitoring and assessing the alpine environment